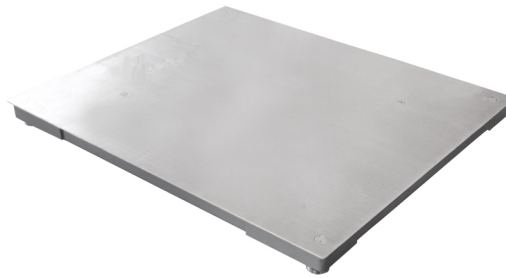


# B6-MS/SS (Mild Steel or Stainless Steel) Heavy Duty Self Contained Platform Scale



**B6-SS pictured. Stainless steel, smooth plate.**

## Description

Self contained heavy duty platform scale with minimum height and no projection above platform level.

Fabricated in mild steel with chequer plate deck (B6-MS) or in grade 304 stainless steel with smooth deck (B6-SS).

## Load Cells

Four shear beam, corrosion resistant, nickel plated, Zemic H8C OIML approved load cells as standard. Rated at IP67. Each cell is fitted with a stainless steel foot assembly with screw height adjustment, locking nut, ball free motion and a synthetic rubber foot cover.

With the stainless steel platforms, four Zemic B8D stainless steel shear beam load cells are utilised,

complete with solid stainless steel foot assemblies and synthetic rubber foot cover.

## Specification

For platform sizes, capacities and strengths refer to chart overleaf. Note that the number and weight value of digital increments must have regards to local weights and measures regulations if stamping is required.

### Indicating System

Suitable for connection to Avery Weigh-Tronix, UWE, Rinstrum, Iconix, EMC, A&D and Ishida Indicators. Refer to the instrumentation data sheets for further details.

### Stamping

MAPSS Approval Number 1461.12 (New Zealand).

### Finish

Navy blue epoxy coating on the B6-MS. Solid stainless steel (grade 304) on the B6-SS.

## Load Cell Junction Box

Protected inside frame sections. 4-way plastic housed (MS) or 4-way stainless steel housed (SS). 3m cable connects the junction box to the indicator.

## Environment

**Operating Temperature Range**  
-10°C to 40°C (ambient)

**Resistant to Dirt & Moisture**  
Hose proof and sealed to IP67 (MS)  
Hose proof and sealed to IP68 (SS)

**Capacities / Strengths**

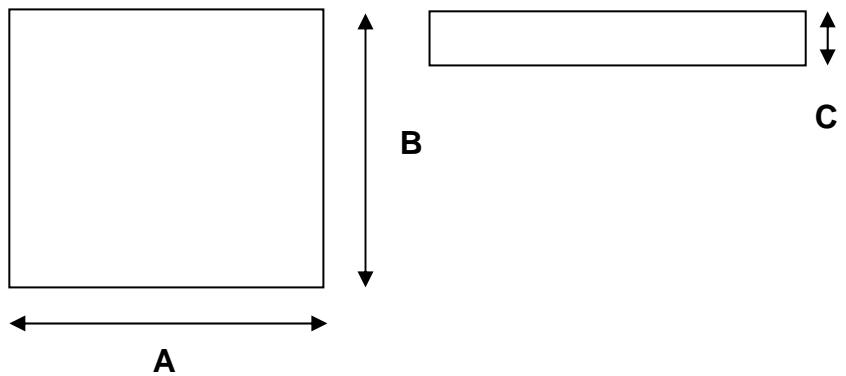
Platform Size	Approved Capacities	Distributed Strength
1500 x 2000 x 110mm	5000kg x 2kg	6000kg
2000 x 2000 x 110mm	5000kg x 2kg	6000kg

- \*Maximum number of increments – 6000 Non Trade
- \*Maximum axle load is 55% of distributed strength
- \*Other capacities / sizes available on special request

**Options**

1. Arranged for pit mounting.
2. Increased interconnection cable length to 10m.
3. Non standard platform sizes can be manufactured.
4. Ramps, mild or stainless steel.
5. Special paint finishes, Blast, Hot Zinc Spray and Seal Coat.
6. Remote IP65 load cell junction box.

**Dimensions**



Normal Platform Size A x B x C	Approx Weight
1500 x 2000 x 110mm	275kg
2000 x 2000 x 110mm	295kg